

Serving the World Since Last 36 Years



RELIABLE PIPES & TUBES LTD.

EXPORTERS & STOCKIST OF :

Stainless Steel, Carbon Steel, Nickel Alloys, Duplex, Super Duplex
& other Non-Ferrous Metals in the form of
Pipes, Tubes, Fittings, Flanges, Sheet, Plates, Coils, Rods, Angles etc.



API 5L PIPES



4130 PIPES & FITTINGS



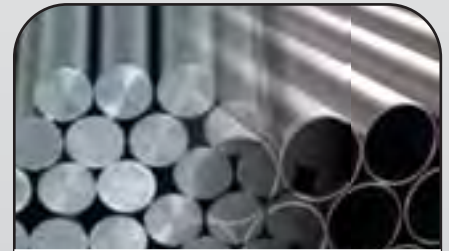
C. S. PIPES & TUBES



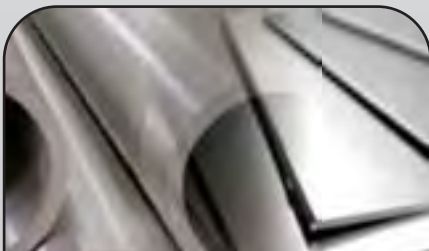
S. S. PIPES & TUBES



FITTINGS & FLANGES (All Grades)



TITANIUM



SPECIAL STEEL



HIGH NICKEL ALLOY



ALUMINIUM / ALU. BRASS / COPPER NICKEL



SQUARE & HOLLOW SECTION
ELECTROPOLISHED PIPES & TUBES



PERFORATED SHEET & COLOR COATED SHEET



FASTENERS

RELIABLE PIPES & TUBES LTD. C-16, Anand Bhuvan, 163/165, V. P. Road,
Mumbai - 400 004. Maharashtra, India. | Phone : +91-22-4343 1313 (25 Lines)
Contact Person : Mr. Abhilash Nair | Mobile : +91 9324233293 | Fax : +91 22 2389 4511

Email : export@reliablepipes.com
Web : www.reliablepipes.com

certificates



RELIABLE PIPES & TUBES LTD.

Certificate

Standard: **ISO 9001:2008**

Certificate Registration No: **85 100 001 12194**

TCV Recycled (India) Pvt. Ltd. Certified

Certificate Holder: **Reliable Pipes & Tubes Limited,
C-16, Anand Bhawan, 163/165 V.P. Road,
Mumbai - 400 054, India.**

Scope: **Supplier & Exporter of Carbon Steel, Alloy Steel, Stainless Steel & High Nickel Alloy Seamless and Welded Pipes, Tubes, Plates, Valves, Flare, Pipe Fittings and Flanges, Manufacturers & Exporters of Tube Sheet, Heat Exchangers, Dist. Ends, Motor Bends, Hot Industrial Bends, Pressure Vessels, Water jet & Special Engineering Components.**

As such was performed Report No. 12194. Found that team approved that the requirements according to ISO 9001:2008 are fulfilled.
(The due date for all future audits is 01-07-2011 onwards)

Validity: **The certificate is valid from 2013-08-21 until 2015-08-26**




Certificate

**Quality-Assurance System
for Manufacturer of Materials**

acc. to Directive 90/269/EEC

Certificate No: **81 012 8024-15-0022**

Name and address of the manufacturer: **Reliable Pipes & Tubes Limited
C-16, Anand Bhawan,
163/165, V. P. Road,
Mumbai - 400004, India**

Issued acc. to Directive 90/269/EEC: **DN System acc. to EN 10420, section 4.2 and
4.3 (MS-Material 90)**

Authorized by: **BSI 11 0011**

Range of material: **Manufacturing and supply of Forged Flanges & Manometer Components, Pipe Fittings Flanges & Valves, non-ferrous in certificate**

Manufacturing plant: **Reliable Pipes & Tubes Limited
C-16, Anand Bhawan,
163/165, V. P. Road,
Mumbai - 400004, India**

Valid until: **February 05, 2015**

Issue: February 05, 2010




**Environmental Management System
Certificate of Approval**

This is to certify that the Environmental Management System of

RELIABLE PIPES & TUBES LIMITED
C-16, Anand Bhawan, 163, 165, V. P. Road,
Mumbai-400004, India

has been assessed and found to meet the requirements of

ISO 14001:2004

The certificate is valid for the following scope of operation:

Supplier & Exporter of Carbon Steel, Alloy Steel, Stainless Steel, High Nickel Alloy, Seamless and Welded Pipes, Tubes, Plates, Valves, Flare, Pipe Fittings & Flanges, Manufacturers & Exporters of Tube Sheet, Heat Exchangers, Dist. Ends, Motor Bends, Hot Industrial Bends, Pressure Vessels, Water Jet & Special Engineering Components

Date of Issue: **08/05/2013**
Certificate Valid till: **20/05/2015**
Certificate Number: **EN114/01**
Name of Original Issue: **08/05/2013**

CERTIFICATION BOARD

SGS

This certificate is valid from 20/05/2013 until 20/05/2015 and remains valid subject to satisfactory surveillance audits. Re-certification audits before 19/05/2014

Surveillance Audit: **For Date: [] Aud Date: []**



The certificate is valid until 20/05/2015 if the annual surveillance audit is performed.

SGS, B-10 100, S.A., SHARLIMONT, CHAMPELLE (59), BELGIUM - 069 01 29 00
To verify the validity of this certificate, please visit our website: www.sgs-certs.com or call us on 0032-22000000

**Occupational Health & Safety Management System
Certificate of Approval**

This is to certify that the Occupational Health & Safety Management System of

RELIABLE PIPES & TUBES LIMITED
C-16, Anand Bhawan, 163, 165, V. P. Road,
Mumbai-400004, India

has been assessed and found to meet the requirements of

OHSAS 18001:2007

The certificate is valid for the following scope of operation:

Supplier & Exporter of Carbon Steel, Alloy Steel, Stainless Steel, High Nickel Alloy, Seamless and Welded Pipes, Tubes, Plates, Valves, Flare, Pipe Fittings & Flanges, Manufacturers & Exporters of Tube Sheet, Heat Exchangers, Dist. Ends, Motor Bends, Hot Industrial Bends, Pressure Vessels, Water Jet & Special Engineering Components

Date of Issue: **08/05/2013**
Certificate Valid till: **20/05/2015**
Certificate Number: **08/01/01**
Name of Original Issue: **08/05/2013**

CERTIFICATION BOARD

SGS

This certificate is valid from 20/05/2013 until 20/05/2015 and remains valid subject to satisfactory surveillance audits. Re-certification audits before 19/05/2014

Surveillance Audit: **For Date: [] Aud Date: []**



The certificate is valid until 20/05/2015 if the annual surveillance audit is performed.

SGS, B-10 100, S.A., SHARLIMONT, CHAMPELLE (59), BELGIUM - 069 01 29 00
To verify the validity of this certificate, please visit our website: www.sgs-certs.com or call us on 0032-22000000

Profile



RELIABLE PIPES & TUBES LTD.

The Company - Reliable Pipes & Tubes Ltd.

Reliable a company professionally managed group and a leading exporters, importers, manufacturers, stockist & traders for various core industries & projects in the field of Stainless Steel, Carbon Steel & Alloy Steel.



Company was established in the year 1975 with a vision to “ Trade in Industrial raw materials”. It was an inspired decision which resulted tremendously in company’s progress in the last 37 year. Today Reliable has approximately over thousand customers in India & abroad.



As the name suggest our prime focus is to create “ The Reliability” in the minds of our customers. Our mission is to provide the best customer service by supplying materials with the most updated technology, respecting the agreed delivery date, monitoring at every stage of sourcing and supply chain management and in order to represent for our customers a reference for reliabilty, competence and service



We are achieving our aim because of structural factors like the widening of the sales network, the certificated quality of its products and innovation and the valuing of its human resources, focus on clients.



Mission

To excel in our chosen field of business and thereby realize on a long term basis a satisfactory return on investment for management.

CUSTOMER SATISFACTION IS WHAT WE ASPIRE FOR BY PROVIDING QUALITY PRODUCTS & PROMPT DELIVERY

ORIGIN

EUROPE

JAPAN

USA

SOUTH AFRICA

KOREA

INDIA

GERMANY

CHINA

TAIWAN

TURKEY

UKRAINE

contents

INTRODUCTION	01
API 5L PIPES	02
4130 PIPES & FITTINGS	03
CARBON STEEL PIPES & TUBES	04
STAINLESS STEEL PIPES & TUBES	05
FITTINGS (ALL GRADES)	06
FLANGES (ALL GRADES)	07
TITANIUM	08
SPECIAL STEEL	09
HIGH NICKEL ALLOY	10
ALU. /ALU. BRASS / COPPER NICKEL	11
SQUARE & HOLLOW SECTIONS	12
ELECTROPOLISHED PIPES & TUBES	13
STUDDED PIPES	14
FIN TUBES	15
BAFFLE PLATE / TUBE SHEET	16
PERFORATED & COLOR COATED SHEET	17
THRU KOTE	18
PIG LAUNCHER & RECEIVER	19
HALF REPAIR PIPE SLEEVE	20
FASTENERS	21
THIRD PARTY INSPECTION	22

THIRD PARTY INSPECTION BY

LRIS, ABS, DNV, TUV, VELOSI, SGS, BV, GL etc. can be done.

API 5L PIPES



Products :

Pipes :

SEAMLESS, LSAW/DSAW, HSAW, ERW / HFW

Grades :

(A) : API 5L GR B PSL1/PSL2, X42, X46, X52, X56, X60, X65, X70, X80, X100, PSL 1, PSL 2,

(B) : L245, L290, L320, L360, L415, L450, L485, L555

Sizes : (DRL/SRL)

LSAW/DSAW - 16" OD TO 54" OD (8MM TO 50 MM THK)

HSAW - 8" NB TO 100" NB (5MM TO 25MM THK)

SEAMLESS - 1/2" NB TO 42" NB (SCH 40 TO SCH XXS & HEAVY THK)

ERW/HFW - 1/2" NB TO 30" NB (3.2 MM TO 16MM THK)



Supplementary Requirement :

NACE MR0175, MR0103 / ISO 3183 / NACE TM0284

HIC & SSC TESTED PIPES

SOUR SERVICES, OFF SHORE SERVICES

WITH LOW SULPHUR <0.002%

IMPACT TEST AT -50°C

3 LAYER POLYETHYLENE COATING

3 LAYER POLYPROPYLENE COATING

EPOXY COATING



DELIVERY CONDITION

AS ROLLED

NORMALIZED

THERMOMECHANICAL ROLLED / FORMED,

NORMALIZED & TEMPERED,

QUENCHED & TEMPERED



Certificate :

EN 10204 3.1 & EN 10204 3.2

RELIABLE PIPES & TUBES LTD. C-16, Anand Bhuvan, 163/165, V. P. Road,
Mumbai - 400 004. Maharashtra, India. | Phone :+91-22-4343 1313 (25 Lines)
Contact Person : Mr. Abhilash Nair | Mobile : +91 9324233293 | Fax : +91 22 2389 4511

Email : export@reliablepipes.com

Web : www.reliablepipes.com

4130 PIPES & FITTINGS



This low alloy steel containing nominally 0.3% carbon, 1% chromium and 0.2% molybdenum is used widely in oil patch applications. It is similar to 4140 which has a higher carbon level giving 4130 improved weldability in comparison to 4140, though this is achieved at the expense of through thickness strength. The hardenability limitations of this grade (depth to which it will harden / obtain the specified mechanical properties after heat treatment) must always be taken into account when designing and selecting equipment.



Products :

Pipes, Fittings & Tubes - SEAMLESS

Grades :

LOW ALLOY STEEL, ASTM A 519 GR. 4130 / 4140
API 5CT L80 (MECHANICAL PROPERTIES) &
AS PER AISI 4130 / 4140 (CHEMICAL PROPERTIES)

Sizes :

PIPES - 2" NB TO 12" NB & ANY SPECIAL ODD SIZES
THICKNESS - SCH 40 TO SCH XXS ALSO HIGH THK
FITTINGS - ELBOW - 90 DEG, 45 DEG, 180 DEG, TEES,
REDUCERS



Supplementary Requirement :

NACE MR0175 / MR0103 ISO 3183 / NACE TM0284
YS - MIN 85,000, UTS - 1,10,000 WITHSTANDING
15,000 PRESSURE.

DELIVERY CONDITION

ANNEALED
NORMALIZED
STRESS RELIEVED
QUENCHED & TEMPERED

Certificate :

EN 10204 3.1 & EN 10204 3.2



RELIABLE PIPES & TUBES LTD. C-16, Anand Bhuvan, 163/165, V. P. Road,
Mumbai - 400 004. Maharashtra, India. | Phone :+91-22-4343 1313 (25 Lines)
Contact Person : Mr. Abhilash Nair | Mobile : +91 9324233293 | Fax : +91 22 2389 4511

Email : export@reliablepipes.com
Web : www.reliablepipes.com

CARBON / ALLOY STEEL PIPES & TUBES



Products : Pipes, & Tubes

SEAMLESS , ERW, HFW, EFSW

Standard & Grades :

Standard : ASTM A 106, ASTM A 53, ASTM A333, ASTM A 671, ASTM A 672, ASTM A 139, ASTM A335, ASTM / ASME A/SA 213

Grade : GR A / GR B / GR C, GR 3, GR 6, GR CC60 / CC65 / CC70 CLASS 10 TO CLASS 73, GR C60 / C70 CLASS 10 TO CLASS 53 / P1, P5, P9, P11, P22, P91, T9, T11, T12, T22, T91

Standard : DIN 1626 / 1629 / 17175 / 17179 / 17204 / 2391 / 2393 / 2394 / 17120 / 17172

Grade : St 33, St 34.2, St 35, St 35.8, St 37.0, St 37.2, St 37.4, St 44, St 44.2, St 44-3N, St 44.0, St 45.8, St 52.0, St 52.3, St 52-3N, 15 Mo 3, 13 Cr Mo 4.4, 10 Cr Mo 9.10, St 52.4, StE 290-7, StE 360-7, StE 415-7.

Standard : En 10207-1 / 10210-1 / 10216-1/2/3 / 10297-1 (Seamless), 10305-1/2/3 / 10210 (Seamless Round Pipe), 10208-1 (Class A), 10208-2 (Class B).

Grade : P 195 / 235 / 265 - TR 1/2, P 195 / 235 / 265 - GH, 16 Mo 3, 13 Cr Mo 4 5, 10 Cr Mo 9.10, P 275 - NL-1/2, P 355 - N/NH, E 155 / 195 / 215 / 220 / 235 / 260 / 275 / 320 / 355, S 235 JRH, S 275 / 355 - J2H, L 235 / 245 / 290 / 360 - GA, L245 / 290 / 360 / 415 - NB

Sizes :

SEAMLESS - 1/4" NB TO 28" NB

THICKNESS - SCH 40 TO SCH XXS & HIGHER

ERW/HFW - 1/2" NB TO 30" NB

HSAW - 8" NB TO 100" NB

EFSW - 16" NB TO 54" NB (8MM TO 50MM THK)

Supplementary Requirement :

NACE MR0175, MR0103 / ISO: 3183, NACE TM 0284, SOUR SERVICE,

HIC, SSC TESTED, IMPACT TEST AT -50°C,

3 LAYER POLYETHYLENE COATING,

3 LAYER POLYPROPYLENE COATING,

RADIOGRAPHY (X RAY), BEAD CRUSH

Delivery Condition :

AS ROLLED / ANNEALED / NORMALIZED

STRESS RELIEVED / QUENCHED & TEMPERED.

Certificate :

EN 10204 3.1 & EN 10204 3.2



RELIABLE PIPES & TUBES LTD. C-16, Anand Bhuvan, 163/165, V. P. Road,
Mumbai - 400 004. Maharashtra, India. | Phone :+91-22-4343 1313 (25 Lines)
Contact Person : Mr. Abhilash Nair | Mobile : +91 9324233293 | Fax : +91 22 2389 4511

Email : export@reliablepipes.com

Web : www.reliablepipes.com

STAINLESS STEEL



Products : Pipes, Tubes (SEAMLESS ,WELDED, ERW / EFW, EFSW), Plates, Sheets, Flats, Angles, Coil.

Standard & Grades :

Standard : ASTM A312 / ASTM A 213 A 213M/ ASTM A249 / ASTM A358 (CLASS 1 TO CLASS 5) / ASTM A270 / ASTM A268 / ASTM A269 / ASTM A450 / ASTM 554 / ASTM A791 / ASTM A 789 / ASTM A 409

Grades : TP 304, 304L, 304H, 309S, 310S, 310H, 316, 316L, 316H, 316Ti, 317L, 321, 321H, 347.

17-4PH

(Related Specification EN/DIN1.4542 X5CrNiCuNb16.4 AFNOR Z6CNU17-O4, ASTM-A564 Grade 630 UNS S17400 JIS SUS630, AMS 5643 5604 EN10088-3)

Sizes :

SEAMLESS - 1/8" TO 16" SCHEDULES 10S, 20S, 40S
EXTRA HEAVY (XS) 80, 100, 120, 140, 160, XXS
ERW - 2" TO 24" SCHEDULE - 10S, 20S, 40S, 80S
EFSW - 10" TO 60" (6MM TO 50MM THK)



Supplementary Requirement :

NACE MR0175 / NACE TM0284

IMPACT TEST AT -100°C

RADIOGRAPHY (X-RAY)

GRAIN SIZE : 7 OR COARSER (FOR HIGH CARBON)

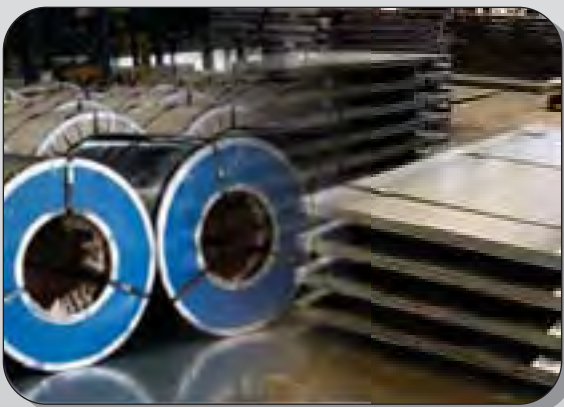
INTERGRANULAR CORROSION TEST WITH PRACTICE A, B, C, D & E. TEST EXAMPLE

ASTM A262 - method A, B,C,D and E

ASTM G28 - method A

ASTM A923 - method C

ASTM G48 - method A and B



DELIVERY CONDITION :

SOLUTION ANNEALED

Certificate :

EN 10204 3.1 & EN 10204 3.2



RELIABLE PIPES & TUBES LTD. C-16, Anand Bhuvan, 163/165, V. P. Road,
Mumbai - 400 004. Maharashtra, India. | Phone :+91-22-4343 1313 (25 Lines)
Contact Person : Mr. Abhilash Nair | Mobile : +91 9324233293 | Fax : +91 22 2389 4511

Email : export@reliablepipes.com
Web : www.reliablepipes.com

FITTINGS



Products :

ELBOW, REDUCER, TEE, NIPPLE, HEX, COUPLINGS, FASTENERS, PLUG, CAP, OLETS, WELDOLETS, UNION, VALVE, BEND, 3D INDUCTION BEND.

Standard & Grades :

STAINLESS STEEL :- Acc ANSI B16.5

ASTM / ASME A/SA 403: WP304, WP304L, WP304H, WP304N, WP304LN, 316, 316L, 316H, 316LN, 316N, 317, 317L, 321, 321H, 347, 347H, WPS31254

ASTM/ASME A/SA 182 F304, F304L, F304H, F310S, F316L, F316H, F321, F321H, F347, F347H, F348.

ASTMA182 F1, F11, F12, F22, F5, F9, F91, F92.

CARBON STEEL & ALLOY STEEL : ANSI B16.5/9

ASTM / ASME A234: WPB, WPC, WP1, WP11, WP12, WP5, WP22, WP9, WP91.

ASTM/ASME A/SA 350 LF1, LF2

FERRITIC / AUSTENITIC STAINLESS STEEL : DUPLEX 2205, SAF2205, UNS S31803, DIN 1.4462 EN 10088 F51

Duplex SAF2205 SANMAC, URANUS 45N, DIN 1.4462

Duplex ASTM A182 Gr F60 / ASME SA182 Gr F60

Duplex-2205 UNS S31803 / UNS S32205 DIN 1.4462 EN 10088-3

Super Duplex SAF 2507 UNS S32750 DIN 1.4410 EN-10088 Uranus 47N(+) Pren=41 Min.

Super Duplex /UNS S32760 F-55 ASTM A 182 F55 DIN 1.4501 UNS 32760 F55

NICKEL / COPPER / TITANIUM : Nickel 200 (UNS NO2200), 201 (UNS NO 2201), Monel 400 (UNS NO 4400) 500 (UNS NO 5500) Inconel 800 (UNS NO8800), 825 (UNS NO 8825), 600 (UNS NO6600), 625 (UNS NO6625), 601 (UNS NO6601), Hastelloy C276 (UNS N10276), Alloy 20 (UNS N08020), Titanium Grade I & II.

Sizes :

STAINLESS STEEL : SEAMLESS : 1/2" NB - 16"NB,

WELDED : 1/2" NB - 32"NB

CARBON STEEL & ALLOY STEEL : SEAMLESS : 2"NB- 24"NB, WELDED : 2"NB-48"NB

HIGH NICKEL ALLOY / SPECIAL STEEL

TITANIUM : SEAMLESS 1/2" NB - 10" NB,

WELDED : 1 1/2" TO 32" NB

Supplementary Requirement : NACE MR0175

Certificate : EN 10204 3.1 & EN 10204 3.2



RELIABLE PIPES & TUBES LTD. C-16, Anand Bhuvan, 163/165, V. P. Road,
Mumbai - 400 004. Maharashtra, India. | Phone :+91-22-4343 1313 (25 Lines)
Contact Person : Mr. Abhilash Nair | Mobile : +91 9324233293 | Fax : +91 22 2389 4511

Email : export@reliablepipes.com

Web : www.reliablepipes.com

FLANGES



Products : FLANGES

Weldneck, Slip-On, Threaded, Blind, Socketweld, Lap-Joint, Orifice, Reducing Flange and Specials, Long Weld Neck Flange, Boss

Types : Forged & Plate

Types of Flange Faces: Raised Face, Flat Face, Ring Joint, Tongue & Groove, Male and Female.

Stainless Steel:

Standard : ASTM, A182, A240

Grade : F304, 304L, 304H, 309S, 309H, 310S, 310H, 316, 316Ti, 316H, 316L, 316N, 317, 317L, 321, 321H, 347, 347H, 904L, 201, 202

Carbon Steel:

Standard : ASTM, A105

Grade : ASTM A105 / A105N / A694F42 / 46 / 52 / 56 / 60 / 65 / 70 / A350 LF3 / A350 LF2

A234WPB, WP11/12, A333-3, A420WPL6, WPHY F52-60-65 (MSS-SP-75)

Alloy / Copper Alloy Steel:

Standard : ASTM / ASME A/SA 182, ASTM / ASME SB 61 / 62 / 151 / 152

Grade : F1, F5, F9, F11, F22, F91, UNS NO. C 92200, UNS NO C B3600, 70600, 71500, C 70600 (CU-NI-90/10), C 71500 (CU-NI-70/30), UNS NO C 10100, C 10200, C 10300, C 10800, C 12000, C 12200

Nickel Alloy Steel:

Standard : ASTM, SB564, SB160, SB472, SB162

Grade : Nickel 200 (UNS No. N02200), Nickel 201 (UNS No. N02201), Monel 400 (UNS No. N04400), Monel 500 (UNS No. N05500), Inconel 800 (UNS No. N08800), Inconel 825 (UNS No. N08825), Inconel 600 (UNS No. N06600), Inconel 625 (UNS No. N06625), Inconel 601 (UNS No. N06601), Hastelloy C 276 (UNS No. N10276), Alloy 20 (UNS No. N08020).

Low Temperature Carbon Steel:

Standard : ASTM, A350

Grade : LF2, LF3

Duplex & Super Duplex Steel:

Standard : ASTM, A182, A240

Grade : UNS F 44, F45, F51, F53, F55, F60, F61

Titanium

Standard: ASTM A213, ASTM A269, ASTM A249

Grade: 2, 3, 5 and 12

Sizes :

1/2" NB to 72" NB

CLASS : 150 #, 300#, 400#, 600#, 900#, 1500#, 2500#

Supplementary Requirement : NACE MR0175 / MK0103 / TM028 ISO / HIC / SSCTESTED

Certificate : EN 10204 3.1 & EN 10204 3.2



TITANIUM



Products :

Pipes, Tubes, Fittings, Elbows, Flanges, Tee Pipes, Cross Pipes, Concentric and Eccentric Reducers, Caps, Stub Ends, Weldolets, Nipples, Forging, Bar, Billet, Plate, Sheet.

Material :

Titanium Gr1 (3.7025), Gr2 (3.7035), Gr 5 (3.7165), Gr7(3.7235), Gr12 (3.7105), Nickel UNS N02200 (2.4066), Zirconium 702 (R60702), 704 (R60704), Tantalum (R05200)

Standard & Grade :

Pipes & Tubes :

ASTM B337, ASME SB337, ASME SB338, ASTM B338, ASTM B861

Gr1, Gr3, Gr3, Gr9, Gr11, Gr12, Gr16, Gr17

For Cold Rolled :

OD 10mm - 114mm

Wall Thickness : 0.5 mm - 5.5 mm

OD over 15 mm 12.000 thk Max.

For Finish Cold Rolled & Annealed :

OD 25mm - 210mm

Wall Thickness : 4 mm - 30 mm

Length : 1000 - 10000 mm

Plate & Sheet

C.P.Ti., Ti-6Al-4V, Ti-6Al-4V ELL, Ti-3Al-2.5V, Ti-0.2Pd, Ti-0.3Mo-0.8Ni according to ASTM, AMS, ASME, MLL, DMS, JIS.

Size :

Thickness	Width	Length
0.6-<0.8	600max, Ti-6Al-4V 800max, C.P.Ti	2000max
0.8-<5.0	1000 max	3048 max
5.0-<8.0	2000 max	4000 max
8.0-<50.0	2500 max	5000 max Ti-6Al-4V 7000 max

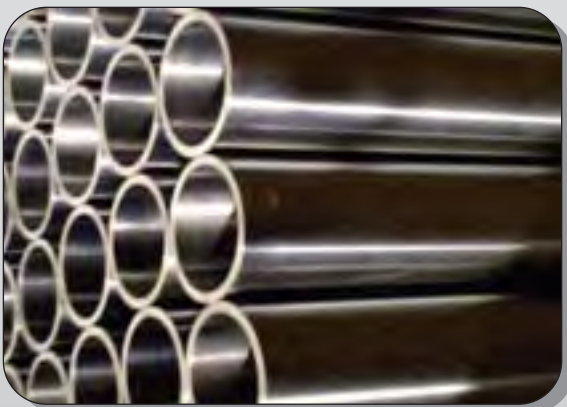
Billets & Bars :

C.P. Ti, Ti-6Al-4V ELL, Ti-5Al-2.5Sn, Ti-3Al2.5V, Ti-15333, Ti-38644, Ti6Al-7Nb, Ti-662, Ti-6242, Ti-1023, Ti-4322, Ti-0.2Pd according to ASTM, ASME, AMS, MLL.

Size : 8mm - 300 mm

Finish : As forged/sand blasted/pickled/machined.

Certificate : EN 10204 3.1 & EN 10204 3.2



SPECIAL STEEL



Products :

Pipes, Tubes, Sheets, Bar, Plate.

Standard :

UNSS31803 (ASTMA 182 / A 790 / A 815 / A 928),
UNSS32750 (ASTMA 182 / 790 / A815 / A 928)
UNSS 32760 (ASTMA 182 / 790 / A815 / A 928)
SMO 254, 17-4 PH, 6MO, UNS S32550, ASTM A 240 / 312 / 358 / 403

Grades :

Gr F51, Gr F53, Gr F55, Material No. 1.4410/1.4501/1.4565

ALL GRADES CAN BE SUPPLIED AS BAR, PLATE, SHEET OR CUT FROM BLOCK. NON STANDARD SIZES CAN BE PRODUCED AS STEEL FORGINGS.

Sizes :

Pipes & Tubes :

1/2" NB to 24" NB
3 mm to 20 mm

Plate & Sheet : 1mm to 24 mm

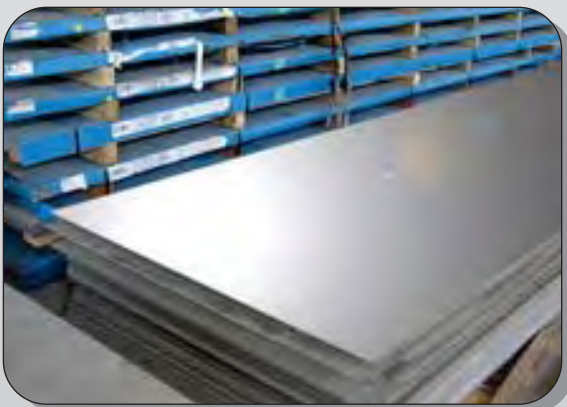
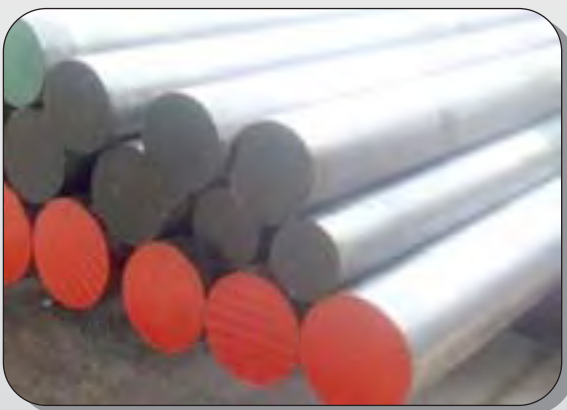
Width : 1000 / 1250 / 1500 x 6000

Bar : 5 mm to 100mm

Supplementary Requirement :

NACE MR0175

Certificate : EN 10204 3.1 & EN 10204 3.2



RELIABLE PIPES & TUBES LTD. C-16, Anand Bhuvan, 163/165, V. P. Road,
Mumbai - 400 004. Maharashtra, India. | Phone :+91-22-4343 1313 (25 Lines)
Contact Person : Mr. Abhilash Nair | Mobile : +91 9324233293 | Fax : +91 22 2389 4511

Email : export@reliablepipes.com
Web : www.reliablepipes.com

HIGH NICKEL ALLOY



Products :

Pipes, Tubes, Forging, Bar, Plate.

Material

Alloy 200 / 201 / 400, Alloy K-500, Alloy 600, Alloy 601, Alloy 625, Alloy 718, Alloy 800, Alloy 800H, Alloy 800HT, Alloy 825, Alloy C-276, Alloy C-4, Alloy C-22, Alloy B-2, Alloy 20, Alloy 904L

Trademark

Nickel 200 / 201, Monel 400, Monel K-500, Inconel 601 / 625 / 718, Incoloy 800 / 800H / 800HT / 825, Hastelloy C-276 / C-4 / C-22 / B-2, Uranus B-6

UNS :

NO2200, NO2201, NO4400, NO5500, NO6600, NO6601, NO6625, NO7718, NO8800, NO8810, NO8811, NO8825, NO10276, NO6455, NO6022, N10665, NO8020, NO8904

Standard :

Pipe : SMLS / Welded

B161 / B725 / B167 / 517 B444/B705, B407 / B514 / B423 / B622 / B619 / B729 / B464 / B677 / B673

Tube : SMLS / Welded

B163 / B730 / B444 / B704 / B516 / B515 / B622 / B626 / B729 / B468 / B677 / B674

Bar :

B160 / B164 / B865 / B166 / B446 / B637 / B408 / B425 / B574 / B335 / B473 / B649

Plate :

B162 / B127 / B168 / B443 / B670 / B409 / B424 / B575 / B333 / B463 / B625

Forging

B564 / B865 / B637 / B462 / B459

Size :

Seamless : 1/2" - 12" Sch 10 - Sch 160

Welded : 4" - 24" (3mm to 20mm)

Round : - 3 mm - 100 mm

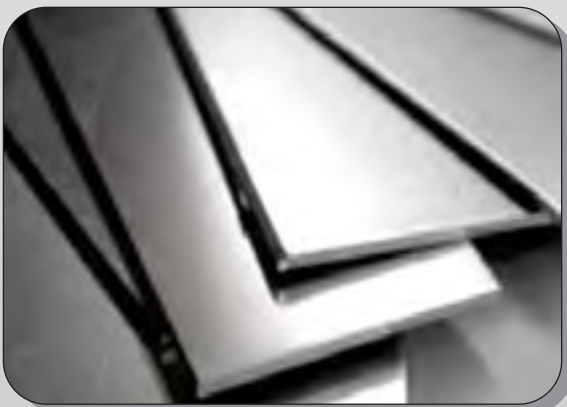
Sheet : 0.5 mm - 50mm

Width : 1000/1250 / 1500 x 6000 mm

Supplementary Requirement :

NACE MR0175

Certificate : EN 10204 3.1 & EN 10204 3.2



RELIABLE PIPES & TUBES LTD. C-16, Anand Bhuvan, 163/165, V. P. Road,
Mumbai - 400 004. Maharashtra, India. | Phone :+91-22-4343 1313 (25 Lines)
Contact Person : Mr. Abhilash Nair | Mobile : +91 9324233293 | Fax : +91 22 2389 4511

Email : export@reliablepipes.com
Web : www.reliablepipes.com

ALUMINUM / ALUMINUM BRASS / COPPER NICKEL TUBES



ALUMINUM

Standard & Grade : Aluminum & Plate

6061, 7050, 7075, 2024, 2219, UNS A96061, ASTM-B-316, MIL-A-46118, MIL-A-46808, MIL-A-8920, ASTM-B-209, ASTM-B-221

Temper : 6061-0, T4, T6, T451, T651 / 7050-0, T451, T7651, 7075-0, T6, T73, T76, T651, T7351, T7651 / 2024-0, T3, T81, T851 / 2219-0, T31, T81, T37, T87, T351, T851.

Bare : QQ-A-250/11, AMS 4025, AMS 4026, AMS 4027, ASTM-B-209, AMS 4050, AMS4201, DMS-2233, BMS 7-323, QQ-A-250/12, QQ-A-250/24, AMS 4044, AMS 4055, AMS 4078, QQ-A-250/4, AMS 4035, AMS 4037, FMS 10101, QQ-A-250/30, AMS 4031

Clad : QQ-A-250/13, QQ-250/25, AMS 4088, AMS 4049, BMS 7-302, QQ-A-250/5, AMS 4040, AMS 4041, BMS 7-305, AMS 4094, AMS 4095, AMS 4096, DMS-1719, BMS-7-110.

Dimensional Range

Tube : 6 mm to 304.8 mm

Thk : 0.036" - 1.5"

Sheet : 0.1 mm to 50 mm

Plate : 1000 / 1200 / 1500 & Coil - 6000



ALUMINUM BRASS TUBE

Standard Grade for Aluminum Brass - C68700/ Admiralty Brass Tube - C44300 / Arsenical Brass Tube - C26130

T8890 / ASTM B111 / JIS H3300 EN 12451

Dimensional Range

Out Diameter : 5.0 mm - 350 mm

Wall thickness : 0.5 mm - 50 mm



COPPER NICKEL TUBES

Standard Grade for Copper Nickel 90/10 & Copper Nickel 70/30

BS2871 / ASTM B-11 / IS 1545 / JIS H 3300 / NFA 51 102

Dimensional Range

Out Diameter : 5.0 mm - 350 mm

Wall thickness : 0.5 mm - 50 mm



RELIABLE PIPES & TUBES LTD. C-16, Anand Bhuvan, 163/165, V. P. Road,
Mumbai - 400 004. Maharashtra, India. | Phone :+91-22-4343 1313 (25 Lines)
Contact Person : Mr. Abhilash Nair | Mobile : +91 9324233293 | Fax : +91 22 2389 4511

Email : export@reliablepipes.com
Web : www.reliablepipes.com

SQUARE & HOLLOW SECTION



PRODUCTS : Hollow Section

MATERIAL : SS & CS

TYPES : SQUARE & RECTANGULAR

Grade:

204Cu, 304, 304L, 316, 316L, 316Ti, 321, 409, 430, 2101, S235 JRH, S275 JOH, J2H, NH, NLH, MH, MLH, S355 JOH, J2H, NH, NLH, MH, MLH, G1+N, G13+N/+Q, S460 MH, MLH, NH, NLH, A554
Steel Grade Available : YST 210 / 240 / 310



Size :

Square : Imperial Sizes are also available from 1" x 1" to 20" x 20"

Thickness is available from 0.047" to 1"

Specific dimension and thickness is also available

Length : 12000mm

Rectangular : Imperial Sizes are also available from 1.5" x 1" to 100" x 20"

Thickness is available from 0.047" to 1"



DELIVERY CONDITION

NORMALIZED

ANNEALED,

QUENCHED & TEMPERED

Finish

Finish (S.S), Bright,

Mirror Grade 180, 360, 610

Matt - 2B, 2D

Bead Crush



RELIABLE PIPES & TUBES LTD. C-16, Anand Bhuvan, 163/165, V. P. Road,
Mumbai - 400 004. Maharashtra, India. | Phone :+91-22-4343 1313 (25 Lines)
Contact Person : Mr. Abhilash Nair | Mobile : +91 9324233293 | Fax : +91 22 2389 4511

Email : export@reliablepipes.com

Web : www.reliablepipes.com

ELECTROPOLISHED Tubes/Pipes/Fittings



PRODUCTS :

Stainless steel pipes, fittings, flanges, fasteners, strips, plates and other products. Seamless & welded pipes as per the requirements of varied industries.

Standard

ASTM A 182 F304 / ASTM A213 & A240

Grade

TP 304, 304H, 309, 310, 316, 316L, 317L, 321, 347, 904L



Elbow

Size : 1/2" NB - 4" NB

Class : 3000 LBS, 6000 LBS, 9000 LBS

Type : Socket Weld & Screwed - NPT, BSP, BSPT

Form : 45°, 90°

Tee

Size : 1/2" NB - 8" NB

Thk : 2 mm - 25 mm

Class : 3000 LBS, 6000 LBS, 9000 LBS

Type : Socket Weld & Screwed - NPT, BSP, BSPT

Form : Reducing, Unequal, Equal



Tubes

Size : 1/2" NB - 4" NB

Class : 3000 LBS, 6000 LBS, 9000 LBS

Type : Electro Polish Tube, Capillary Tube, Precision Tube

Other types of Abnormality pipe is customized

Surface: Grit polish (180 / 360), bright etc.



RELIABLE PIPES & TUBES LTD. C-16, Anand Bhuvan, 163/165, V. P. Road,
Mumbai - 400 004. Maharashtra, India. | Phone :+91-22-4343 1313 (25 Lines)
Contact Person : Mr. Abhilash Nair | Mobile : +91 9324233293 | Fax : +91 22 2389 4511

Email : export@reliablepipes.com

Web : www.reliablepipes.com

STUDED PIPE



Product :

Materials: Carbon Steel, Stainless Steel, Duplex & Super Duplex Steel, Alloy Steels (P5,P9,P11, P22), Inconel, High Chrome High Nickle & Incolloy Etc. (any Ferrous Material)

Pipe Diameter: Min 2" Nb To Max 8" Nb Pipe

Stud Details

Stud Height: Min 0.5" (12.7 Mm) To Max – 2.5" (63.5MM)

Stud Diameter: Standard Size Is Circular For Extended Portion 0.5" (12.7MM) (can Be Changed As Per Customer Requirement)

Stud Spacing: 0.625" (15.875 Mm) Or 63 Studs Per Plane Per Meter (can Be Changed As Per Customer Requirement)

Stud Materials: Carbon Steel, Stainless Steel And Alloy Steel (Any Ferrous Material)

Certificate : EN 10204 3.1 & EN 10204 3.2



RELIABLE PIPES & TUBES LTD. C-16, Anand Bhuvan, 163/165, V. P. Road,
Mumbai - 400 004. Maharashtra, India. | Phone :+91-22-4343 1313 (25 Lines)
Contact Person : Mr. Abhilash Nair | Mobile : +91 9324233293 | Fax : +91 22 2389 4511

Email : export@reliablepipes.com
Web : www.reliablepipes.com

FIN TUBES



Material : Carbon & Carbon Alloy, Stainless & Duplex Alloy, Copper & Copper Alloy, Titanium & Titanium Alloy, Nickel Alloy.

LOW FIN TUBE

Bare Tube Diameter : 12.7 mm - 38.1 mm

Pitch : 19 ~ 36 FPI

Fin Height : 0.7mm ~ 1.588mm

Length : 20,000mm (Max)

Standard : ASTM A496 / ASTM A1012 / ASTM B359 / ASME SB359 / ASTM B891 / ASTM B924



HIGH FIN TUBES

ALUMINUM FIN

Bare Tube Diameter : 15.88mm~50.8 mm

Fin Pitch : 7 ~ 12 FPI

Fin Height : 6.35mm ~25.4mm

Fin Thickness : 0.3mm~0.75mm

Fin Material : Aluminum or Copper

COPPER & COPPER ALLOY HIGH FIN

Bare Tube Diameter : 19mm ~ 25mm

Pitch : 5~9 FPI

Fin Height : 7mm ~11mm

Length : 10,000 mm (Max.)



HIGH FREQUENCY FIN TUBE

Tube Outside Diameter : 3/8 inch ~ 8 inch

Fin Thickness : 0.8mm ~3.2mm

Fin Height : 9mm ~ 38mm

Fin Pitch : 60FPM ~ 315FPM

Finning Length : 24,000mm (Max.)

TYPES OF FIN TUBES :

Type L : Temperature 130°C (270°F)

Type KL : Temperature 250°C (480°F)

Type LL (double L) : Temperature 165°C (330°F)

Type G (Embedded) : Temperature 400°C (750°F)

Type Extruded : Temperature 310°C (590°F)

Type Low Fin : Temperature depends on the base tube material



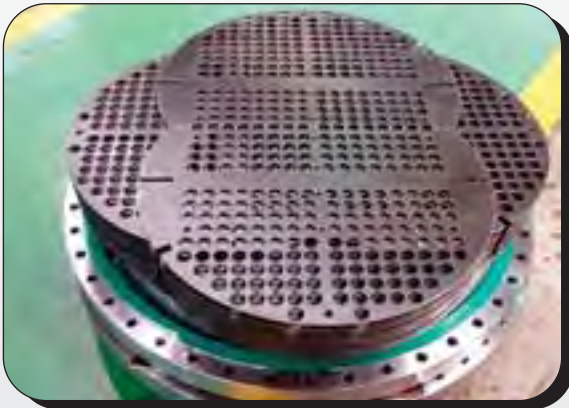
Certificate : EN 10204 3.1 & EN 10204 3.2

RELIABLE PIPES & TUBES LTD. C-16, Anand Bhuvan, 163/165, V. P. Road,
Mumbai - 400 004. Maharashtra, India. | Phone :+91-22-4343 1313 (25 Lines)
Contact Person : Mr. Abhilash Nair | Mobile : +91 9324233293 | Fax : +91 22 2389 4511

Email : export@reliablepipes.com

Web : www.reliablepipes.com

BAFFLE PLATE / TUBE SHEET



BAFFLE PLATE :

Baffles serve three functions: 1) support the tube; 2) maintain the tube spacing; and 3) direct the flow of fluid in the desired pattern through the shell side.

A segment, called the baffle cut, is cut away to permit the fluid to flow parallel to the tube axis as it flows from one baffle space to another. Segmental cuts with the height of the segment approximately 25 percent of the shell diameter are normally the optimum. Baffle cuts larger or smaller than the optimum typically result in poorly distributed shell side flow with large eddies, dead zones behind the baffles and pressure drops higher than expected.



The spacing between segmental baffles is called the baffle pitch. The baffle pitch and the baffle cut determine the cross flow velocity and hence the rate of heat transfer and the pressure drop. The baffle pitch and baffle cut are selected during the heat exchanger design to yield the highest fluid velocity and heat transfer rate while respecting the allowable pressure drop.

Other types of baffles are sometimes used such as: double segmental, triple segmental, helical baffle, EM baffle and ROD baffle. Most of these types of baffles are designed to provide fluid flow paths other than cross flow. These baffle types are typically used for unusual design conditions. Longitudinal baffles are sometimes provided to divide the shell creating multiple passes on the shell side. This type of heat exchangers is sometimes useful in heat recovery applications when several shell side passes allow to achieve a severe temperature cross.



TUBE SHEET

Tube-sheets in Carbon Steel, Stainless steels or alloy steels, non ferrous alloy: clad or Integral. Both the cladding (weld overlay) and the Machining are made in our shops. The maximum working diameter is 1500 mm. GBM makes tube-sheets with standard machining with or without grooves in holes or special preparation, beveling or facing. Fascia a Sinistra Inserire le Foto di Macro di saldature tubo-piastra accoppiandole al relativo sketch (non è necessaria la legenda) Legenda: "Macro on Tube to tube-sheet weld"



Tubesheets are plates or forgings drilled to provide holes through which tubes are inserted. Tubes are appropriately secured to the tubesheet so that the fluid on the shell side is prevented from mixing with the fluid on the tube side. Holes are drilled in the tubesheet normally in either of two patterns, triangular or square.

PERFORATED SHEETS / COLOR COATED SHEETS



PERFORATED SHEETS

Products : Sheet, Panels, Metal Screen, Plate, Mesh, Louvers Ducting, Chequer Plates, Architectural Mesh, Security Screen, Filter Tube, Stainless Steel Sheet, Copper Perforated Mesh, Aluminum Sheet, Steel Sheet.

Perforated metal products from stainless steel, galvanized steel and cold-rolled carbon steel. Perforated sheets can be produced from sheets providing options that include margins and blank areas, along with full perforation. A common way to produce perforated sheets is using coils. This method provides great flexibility in both design and handling. Perforated coils can be produced from coils, as well, which is generally faster than perforating sheets.

Standard Size 1000x2000 mm,

Thicknesses from 0,3 mm up to 10 mm

Perforation from 0,3 mm up to 100 mm.

Perforation range: round, square and rectangular holes.

Usually holes diameter can not be lower than thickness. Usually the round holes layout is at 60°. Squared and rectangular holes, instead, are aligned.



COLOR COATED SHEETS

Base Metal Coil Rolled. Galvanized, galvanized aluminum stainless and Aluminium

Thickness 0.15 to 1.25mm *

Width 600 to 1250mm

Coil ID 508 and 610 mm

Coil OD 1650 mm max

Coil weight 10mt max

Hardness (HRB) 35 - 99

UTS (MPA) 240 - 550

PAINT Systems Primers: Epoxy , polyester & poly urethane regular modified polyester (RMP) Silicon modified , polyester (SMP), super durable polyester (SDP), poly vinylidene fluoride (PVDF), Polyurethane , acrylics ,plastisol, Metallics ,

Back coat : epoxy polyester

Colors As per RAL shades / customer requirements

Guard film 40 micron +/- 5 microns (optional)

Cut to length 500 mm - 4000mm

Slits coils 28mm and above

Standards JIS G 3312, ASTM, A 755, EN 10169-1, IS 14246 & AS 2728

Note: 0.15 - 0.20 mm to be processed only Full Hard.

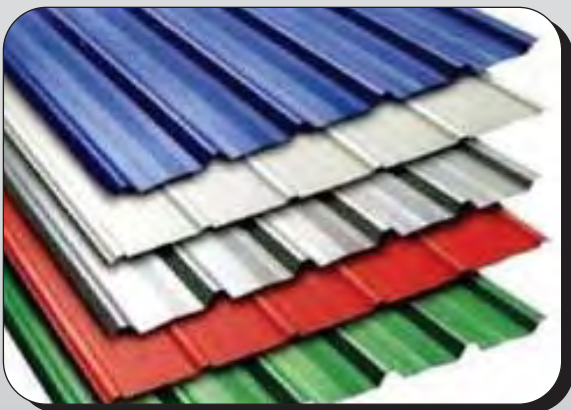
Above 1.25 mm can be processed in specific grades/width combination which needs to be discussed and mutually agreed.

Colour Coated Profile Sheets

Thk (mm)	Width (mm)	Cover Width After Profile (mm)	Length (mm)	Pkt. Weight (MT)
0.40 - 1.00	1220	1000 & 1060	10,000 Max	5 Max

Colour Coated Plain Sheets

Thk (mm)	Width (mm)	Cover Width After Profile (mm)	Length (mm)	Pkt. Weight (MT)
0.15-1.25	1250 max	N.A.	4,000 Max	5 Max



RELIABLE PIPES & TUBES LTD. C-16, Anand Bhuvan, 163/165, V. P. Road,
Mumbai - 400 004. Maharashtra, India. | Phone :+91-22-4343 1313 (25 Lines)
Contact Person : Mr. Abhilash Nair | Mobile : +91 9324233293 | Fax : +91 22 2389 4511

Email : export@reliablepipes.com
Web : www.reliablepipes.com

Thru Kote

PIPE SLEEVE



Product Detail

Pipe sleeve Thru Kote U.B.I. suitable for all sizes of Line Pipe complete with mask and all associated material. To provide corrosion protection on internally coated pipe that is damaged by the heat from welding process.

These products can be used in both onshore and offshore applications and constructed to accommodate any size, grade or configuration of piping system. The sleeves and fittings are compatible with liquid or powder coatings, which are chosen based on operating environment specifics.

Size : Min 60.3 mm OD pipe to 1219 mm OD.

Grade : High Tensile Sleeve - YS Min 65000 , UTS min 77000

Problem Solvers

During the welding process, heat generated within the pipe will burn back the internal plastic coating approximately 1-2 inches from the welding seam. This sleeves and fittings are designed to isolate the burn-back of the coating and protect the steel substrate.

Other benefits include:

- Backing ring and heat tape to reduce excessive temperatures
- Holiday-free connection area
- X-ray compatible with API and ASME
- Fast and flexible method of field construction

Configurations

Sleeve is an unbelled connection system designed to protect internal coatings during welding.

It is a belled connection system allowing for a non-restricted I.D
The insert fittings are fabricated for multiple configurations that help in modifications or repairs: tie-ins, terminations, flanges and elbows.

Color Coating

- Excellent resistance to sea water.
- Can resist up to 120 deg cel temperature.
- Excellent cathodic disbondment resistance.
- Cure under immersed conditions.
- Can be applied externally & internally.
- Suitable for buried application.
- Gloss level - Glossy Finish.

Speciality

We can supply 1000 nos of any size pipe sleeve in maximum 4 weeks.

RELIABLE PIPES & TUBES LTD. C-16, Anand Bhuvan, 163/165, V. P. Road,
Mumbai - 400 004. Maharashtra, India. | Phone :+91-22-4343 1313 (25 Lines)
Contact Person : Mr. Abhilash Nair | Mobile : +91 9324233293 | Fax : +91 22 2389 4511

Email : export@reliablepipes.com
Web : www.reliablepipes.com

Pig Launchers & Receivers



Pig launchers and pig receivers are installed on pipelines to launch and receive pipeline pigs, pipeline spheres and pipeline inspection tools. Pig launchers & pig receivers offer a safe and effective means of inserting and removing pipeline pigs to and from pipelines. Pipeline Engineering fabricates pig launchers and pig receivers to meet the specific requirements of a pipeline.

We can produce all types of pig and sphere launching and receiving systems.

The pig launchers and pig receivers fabricate range from simple barrel pig launchers and receivers through to complete skid mounted units with associated equipment including actuated valves, quick opening closures, instrumentation, pig signallers and control systems.



The pig launchers and receivers we fabricate are suitable for onshore, offshore and subsea pipelines. All units are designed and fabricated to relevant required pipeline and vessel design codes including:

ASME U Stamp Division 1 & 2

ASME VIII

NACE

BS 5500

ASME B31.3, B31.4, B31.8

We fabricate pig launchers and pig receivers from 2" to 60" designed with operating pressures up to 400 bar. Pig launchers and pig receivers are produced in a range of materials, from low strength carbon steel, to high strength carbon steel, and where specified, stainless steel, duplex stainless steel and carbon steel internally clad with corrosion resistant inconel materials.



Multiple pig launchers are designed to allow the sequential launching of pigs and spheres. Using our automatic multiple pig launching system a series of pigs can be launched into a pipeline without having to repeatedly depressurise and re-pressurise after each pig launch. The process can also be controlled from a remote location. This is particularly relevant on unmanned platforms such as offshore platforms and sour service applications.

Sphere release fingers on sphere launchers are used to control the

release of a series of spheres into a pipeline.

Pipeline Engineering will design pig launcher and receiver systems which are 'tailor-made' to meet specific operational requirements. This can include:

Multiple valve operation

Automatic or manually operated pig and sphere release systems

Integrated skid mounted packages

In addition to the supply of newly manufactured pig launchers and pig receivers, Pipeline Engineering provides an inspection, maintenance and refurbishment service to existing in service pig launchers and receivers.

Applications

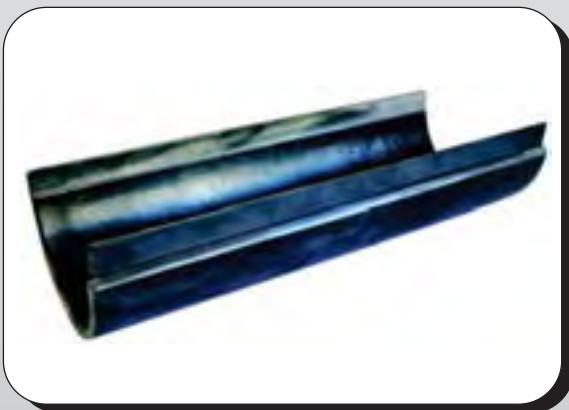
Gas Gathering Systems | Mainline Pipeline | Oil & Gas Transmission

RELIABLE PIPES & TUBES LTD. C-16, Anand Bhuvan, 163/165, V. P. Road,
Mumbai - 400 004. Maharashtra, India. | Phone :+91-22-4343 1313 (25 Lines)
Contact Person : Mr. Abhilash Nair | Mobile : +91 9324233293 | Fax : +91 22 2389 4511

Email : export@reliablepipes.com

Web : www.reliablepipes.com

Half Repair Pipe Sleeves



Half Repair pipe Sleeves are designed to avoid a costly shut down. Existing lines can be cased without thru-put loss, because it is not necessary to shut down the carrier line to perform the required repair. A full scope of sizes, ASTM grades of steel plate (structural and pressure vessel quality), wall thickness and longitudinal edge options are available. Half Sole Repair Sleeves, also called split casing or half wrap, are custom-fabricated to your specifications, to assure a precision product and secure fit.

Material

Material used are structural quality carbon steel or pressure vessel quality carbon steel plates, which are to ASTM specifications, and in the following grades:

ASTM A36 (structural; minimum yield 36,000 psi)

ASTM A572 GR50 (structural; minimum yield 50,000 psi)

ASTM A572 GR65 (structural; minimum yield 65,000 psi)

ASTM A516 GR70 (pressure vessel; minimum yield 38,000 psi)

ASTM A537 Class I (pressure vessel; minimum yield 50,000 psi)

The chemical composition does not exceed the percentages specified for the ASTM material ordered. Repair sleeves are fabricated from plate with low carbon equivalency for good weld ability.

The maximum allowable carbon equivalency (CE) quality carbon steel plates will be based on the heat analysis.

The maximum allowable carbon equivalency (CE) pressure vessel quality carbon steel plates will be based on the heat analysis, in most cases.

Manufacturing

Half Repair Pipe Sleeve is formed by rolling, step braking, or die forming without the use of heat treating.

Longitudinal edges of the Half Sole are beveled for welding, if requested, at 30°. The bevel are a mechanical type and/or produced by plasma torch burning.

Half Repair Pipe Sleeve ends have sheared square edges for fillet welding, unless square end bevel is requested, and are available in maximum lengths of:

Pipe O.D. Size	Sleeve Length
2" thru 3 1/2"	= 5' 0"
4" thru 12"	= 10' 0"
14" thru 16"	= 8' 0"
All sizes over 16"	= 10' 0"

Milling of Half Repair Pipe Sleeve for backing strips

Half Repair pipe sleeve can be milled on the inside longitudinal edges for the backing strips. Depth of 1/16" (.0625) -0" + 1/32" and width of 5/8" (.625) -0 + 1/16" on each side. Outside longitudinal edges are beveled 30° (+5° - 0°) for welding.

Backing Strips

Backing strips are hot rolled commercial carbon steel sheet and strip of commercial quality, A-569/A1011 SS GR33 in coils and cut lengths having a maximum carbon of 0.15%. 1 1/4" wide, 16 gauge (.0598) with a tolerance of: min. .0538 - max. 0658, 10' long, pre-crimped (10 degree total bend).

FASTENERS



BOLTS

Material Grade	A2-70, A4-70, A2-80, A4-80
Size Range	M4 to M16
Length	M4 – M5 (up to 70mm) M6 – M16 (Up to 160mm)



SCREWS & RIVETS

Material Grade	A2-70, A4-70
Size Range	M3 to M10 (#4 to #14)
Length	M5 (up to 50mm) M6 – M10 (up to 80mm)
Thread Type	Fine Thread (AB Type), Coarse Thread (A Type)
Drive	Phillip, Pozzi, Slotted, Torx
End Point	Cone Point "C", Flat Point "F"



NUTS

Material Grade	A2-70, A4-70, A2-80, A4-80
Size Range	M4 to M12

THREADED RODS

Material Grade	A2, A4, A2-80, A4-80, 304, 316 B8 (class 1 & 2), B8M (class 1 & 2)
Size Range	From M3 to M24, 1/4" to 1"
Length	1mts., 3 mts., 6 mts., 3 feet, 12 feet or any special length
Thread Type	Metric (DIN 13-15 & ANSI B1.13M) UNC (ANSI B1.1)
End	Type A and Type B (Chamfered)



WIRE NAILS

Grade	AISI 304, AISI 316, Aluminum, Copper
Head Type	Full Round/Flat Head CSK Head Clouts / Roofing Nails(Large Head) Lost Head / Bullet Head Nails / Lense Head / Decking Nails
Upper surface	Chequered (Diamond) or plain
End Point	Diamond Point / Blunt Point
Type of Shank	Smooth/Plain Barbed Annular / Ring Screw / Helical
Shank Dia (Nail Dia.)	1.6mm to 6.00mm [16 Gauge (0.0625") to 3 Gauge (0.2437")]
Length of Nails	20mm to 150mm (1" to 6")

RELIABLE PIPES & TUBES LTD. C-16, Anand Bhuvan, 163/165, V. P. Road,
Mumbai - 400 004. Maharashtra, India. | Phone :+91-22-4343 1313 (25 Lines)
Contact Person : Mr. Abhilash Nair | Mobile : +91 9324233293 | Fax : +91 22 2389 4511

Email : export@reliablepipes.com
Web : www.reliablepipes.com

THIRD PARTY INSPECTION CERTIFICATE

Inspection Release Note

Client: **Reliable Pipes & Tubes Ltd.**
 Product: **Carbon Steel Pipes**
 Material: **ASTM A106 Gr. B**
 Size: **10" x 0.315"**
 Quantity: **10000**

Inspected by: **[Signature]**
 Date: **15/08/2023**

RELEASE NOTE N°

Product: **Carbon Steel Pipes**
 Material: **ASTM A106 Gr. B**
 Size: **10" x 0.315"**
 Quantity: **10000**

Inspected by: **[Signature]**
 Date: **15/08/2023**

VELOSI

Inspection Release Certificate

Client: **Reliable Pipes & Tubes Ltd.**
 Product: **Carbon Steel Pipes**
 Material: **ASTM A106 Gr. B**
 Size: **10" x 0.315"**
 Quantity: **10000**

Inspected by: **[Signature]**
 Date: **15/08/2023**

GL

Inspection Release Note

Client: **Reliable Pipes & Tubes Ltd.**
 Product: **Carbon Steel Pipes**
 Material: **ASTM A106 Gr. B**
 Size: **10" x 0.315"**
 Quantity: **10000**

Inspected by: **[Signature]**
 Date: **15/08/2023**

INSPECTION RELEASE NOTE

Client: **Reliable Pipes & Tubes Ltd.**
 Product: **Carbon Steel Pipes**
 Material: **ASTM A106 Gr. B**
 Size: **10" x 0.315"**
 Quantity: **10000**

Inspected by: **[Signature]**
 Date: **15/08/2023**

SGS

Inspection Release Note

Client: **Reliable Pipes & Tubes Ltd.**
 Product: **Carbon Steel Pipes**
 Material: **ASTM A106 Gr. B**
 Size: **10" x 0.315"**
 Quantity: **10000**

Inspected by: **[Signature]**
 Date: **15/08/2023**

TUV

Inspection Release Note

Client: **Reliable Pipes & Tubes Ltd.**
 Product: **Carbon Steel Pipes**
 Material: **ASTM A106 Gr. B**
 Size: **10" x 0.315"**
 Quantity: **10000**

Inspected by: **[Signature]**
 Date: **15/08/2023**

INSPECTION CERTIFICATE

Client: **Reliable Pipes & Tubes Ltd.**
 Product: **Carbon Steel Pipes**
 Material: **ASTM A106 Gr. B**
 Size: **10" x 0.315"**
 Quantity: **10000**

Inspected by: **[Signature]**
 Date: **15/08/2023**

GL

Inspection Release Note

Client: **Reliable Pipes & Tubes Ltd.**
 Product: **Carbon Steel Pipes**
 Material: **ASTM A106 Gr. B**
 Size: **10" x 0.315"**
 Quantity: **10000**

Inspected by: **[Signature]**
 Date: **15/08/2023**

RELIABLE PIPES & TUBES LTD. C-16, Anand Bhuvan, 163/165, V. P. Road, Mumbai - 400 004. Maharashtra, India. | Phone :+91-22-4343 1313 (25 Lines)
 Contact Person : Mr. Abhilash Nair | Mobile : +91 9324233293 | Fax : +91 22 2389 4511

Email : export@reliablepipes.com
 Web : www.reliablepipes.com